

Pro-Q® Diamond Phosphoprotein Gel Stain

Quick Facts

Storage upon receipt:

- Room temperature
- Protect from light

Ex/Em: 555/580 nm

Introduction

Molecular Probes' Pro-Q® Diamond phosphoprotein gel stain is a breakthrough technology that provides a method for selectively staining phosphoproteins in polyacrylamide gels (Figure 1). It is ideal for identification of kinase targets in signal transduction pathways and for phosphoproteomic studies.¹⁻³ This proprietary fluorescent stain allows direct, in-gel detection of phosphate groups attached to tyrosine, serine, or threonine residues, without the need for antibodies or radioisotopes.^{1,4} The stain can be used with standard SDS-polyacrylamide gels or with 2-D gels.⁵⁻⁷ The simple and reliable staining protocol delivers results in as little as 4 to 5 hours. Pro-Q® Diamond stain is fully compatible with mass spectrometry, allowing meaningful analysis of the phosphorylation state of entire proteomes.^{1,3,6}

Pro-Q® Diamond phosphoprotein gel stain allows detection of as little as 1–16 ng of phosphoprotein per band, depending on the phosphorylation state of the protein. For individual phosphoproteins, the strength of the signal correlates with the number of phosphate groups and is linear over three orders of magnitude (Figure 2).⁴ Pro-Q® Diamond stain has excitation/emission maxima of ~555/580 nm (Figure 3) and can be detected by use of a visible-light-scanning instrument, a visible-light transilluminator, or (with reduced sensitivity) a 300 nm transilluminator.

Pro-Q® Diamond phosphoprotein gel stain is most useful when used in conjunction with SYPRO® Ruby protein gel stain (S12000, S12001, S21900) (Figure 1).^{1,4,7} SYPRO® Ruby dye is a total-protein stain that is quantitative over three orders of magnitude. Determining the ratio of Pro-Q® Diamond dye to SYPRO® Ruby dye signal intensities for each band or spot thus provides a measure of the phosphorylation level normalized to the total amount of protein. Using both stains in combination, it is possible to distinguish a lightly phosphorylated, high-abundance protein from a heavily phosphorylated, low-abundance protein. We also offer Pro-Q® Diamond phosphoprotein gel stain and SYPRO® Ruby protein gel stain together as convenient Multiplexed Proteomics® Phosphoprotein Gel Stain Kits.

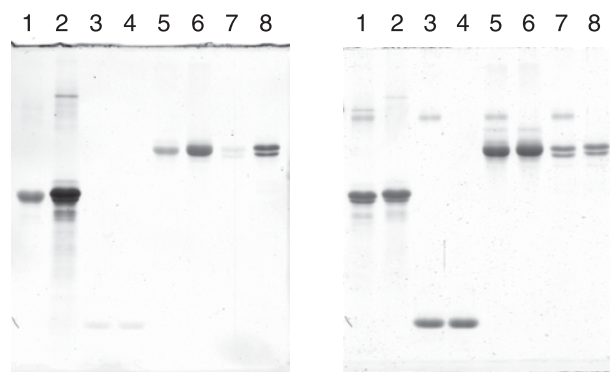


Figure 1. Selectivity of Pro-Q® Diamond phosphoprotein gel stain. A polyacrylamide gel containing various proteins was stained with Pro-Q® Diamond phosphoprotein stain (left) and subsequently with SYPRO® Ruby protein gel stain (right). The gel shows a nonphosphorylated protein, lysozyme (lanes 3 and 4), and phosphoproteins, α -casein (lanes 1 and 2), ovalbumin (lanes 5 and 6), and pepsin (lanes 7 and 8), each before (even lanes) and after (odd lanes) treatment with alkaline phosphatase. Loss of Pro-Q® Diamond staining indicates loss of all phosphates (pepsin), partial loss of phosphates (α -casein and ovalbumin), or no change (the nonphosphorylated protein, lysozyme).

Materials

Contents

Pro-Q® Diamond phosphoprotein gel stain is supplied ready to use as a stand-alone reagent or in various convenient kit formats.

Storage

Upon receipt, store Pro-Q® Diamond gel stain at room temperature, protected from light. For long-term storage, store the stain at 2–6°C, protected from light. When stored properly, the stain should be stable for at least 6 months.

Materials Required but Not Provided

- Reagent-grade methanol
- Glacial acetic acid
- Ultrapure water (18 megohm-cm or equivalent)
- Staining containers (polypropylene or polycarbonate)
- Destain solution (see step 1.2)
- Microwave oven (700–1200 W) (optional)
- Rotary shaker
- Powder-free latex or vinyl gloves

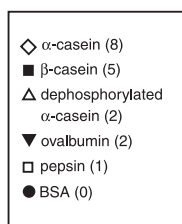
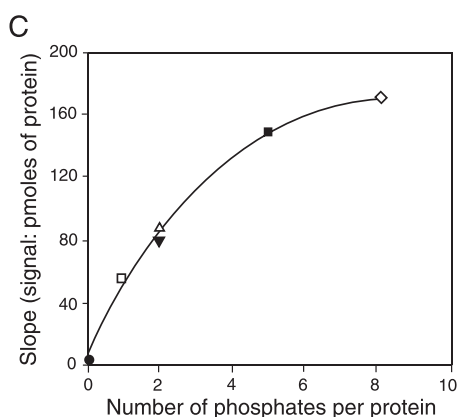
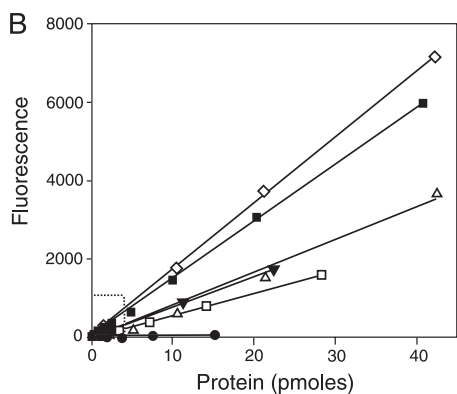
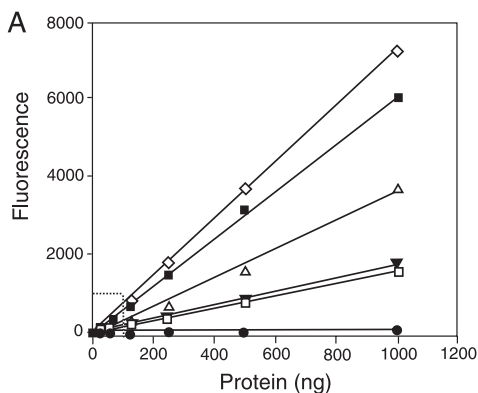


Figure 2. Sensitivity and linear range of Pro-Q® Diamond phosphoprotein gel stain. Six different proteins were serially diluted and run on separate SDS-polyacrylamide gels, then stained with Pro-Q® Diamond phosphoprotein gel stain. The images were documented on a fluorescence imager, and the fluorescence emission from each band was quantitated. The number of known phosphate groups on each protein is indicated in the figure legend. A) Fluorescence emission of the band, plotted as a function of protein amount, in nanograms. B) Fluorescence emission of the band, plotted as a function of picomoles of protein. C) The slope of the line for each protein in panel B, plotted against the known number of phosphates per protein.

Stock Solutions

Prepare all stock solutions using ultrapure water (18 megohm-cm resistance recommended). Stock solutions may be stored at room temperature for up to 6 months, except the fix solution, which should be prepared fresh before each use.

1.1 Fix solution. Prepare a solution of 50% methanol and 10% acetic acid. Prepare 200 mL fix solution per minigel (8 cm × 8 cm × 1 mm) or 1 L fix solution for each large format gel (20 cm × 20 cm × 1 mm).

1.2 Destain solution. There are two options for obtaining the destain solution: 1) purchase Molecular Probes' proprietary Pro-Q® Diamond phosphoprotein gel destaining solution (P33310, P33311); 2) prepare a solution of 20% acetonitrile, 50 mM sodium acetate, pH 4.0. To prepare 1 L of destain solution, combine and mix thoroughly:

- 50 mL of 1 M sodium acetate, pH 4.0
- 750 mL of ultrapure water
- 200 mL of acetonitrile

One 8 cm × 8 cm × 1 mm minigel will require 200–300 mL of destain solution; one large format gel (20 cm × 20 cm × 1 mm) will require ~1.5 L of destain solution.

Sample Preparation and Electrophoresis

2.1 Clean the sample. A delipidated and desalted sample is essential for adequate separation of the proteins by electrophoresis and subsequent staining by Pro-Q® Diamond phosphoprotein gel stain.

- For a 150 µL sample (~150–300 µg of protein), add 600 µL of methanol and mix well by vortexing.
- Add 150 µL of chloroform and mix well by vortexing.
- Add 450 µL of ultrapure water and mix well by vortexing.
- Centrifuge at ~12,000 rpm for 5 minutes.
- Discard the upper phase, keeping the white precipitation disc that forms between the upper and lower phases.
- Add 450 µL of methanol and mix well by vortexing.

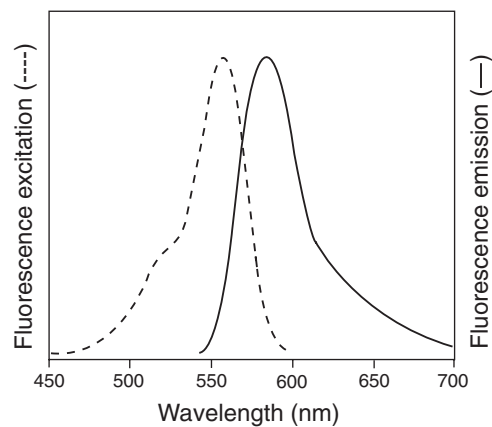


Figure 3. Excitation (dashed line) and emission (solid line) spectra of Pro-Q® Diamond phosphoprotein reagent.

- Centrifuge at ~12,000 rpm for 5 minutes.
- Discard the supernatant and dry the pellet in a vacuum centrifuge for 10 minutes.
- Resuspend the pellet in standard 1X sample buffer for electrophoresis.

2.2 Perform electrophoresis. Separate the proteins using standard polyacrylamide electrophoresis techniques. To ensure detection of less abundant phosphoproteins, use approximately the same mass of protein that you would use for a typical Coomassie® blue dye-stained gel.

Staining Procedure

Tips for Success

- For unambiguous interpretation of results, we recommend using the PeppermintStick™ phosphoprotein molecular weight standards (P27167, P33350) in at least one gel lane.
- Perform all fixation, staining, and washing steps with gentle agitation (e.g., on an orbital shaker at 50 rpm). We recommend polycarbonate or polypropylene containers such as Rubbermaid Servin' Saver® or Stain Shield® containers; these high-density plastics adsorb only minimal amounts of the dye. It is best to use containers dedicated to Pro-Q® Diamond staining, but in any case containers should be thoroughly cleaned and rinsed with 70% ethanol before use.
- As with any fluorescent stain, during staining and subsequent wash steps, cover the gel container to exclude light.
- Adhere strictly to the volumes and times specified in this protocol for fixation, washing, staining, and destaining. Replicating the protocol is essential for consistent gel-to-gel and day-to-day comparisons.
- After obtaining results with Pro-Q® Diamond phosphoprotein gel stain, stain the gel for total protein with SYPRO® Ruby protein gel stain in order to ascertain the relative phosphorylation state of proteins. In this way, an abundant nonphosphorylated protein that exhibits low nonspecific staining with Pro-Q® Diamond stain can be distinguished from a less abundant highly phosphorylated protein. Note that nonquantitative total-protein stains, such as silver stains, are much less useful in this application. Refer to Staining the Gel for Total Protein (below) for recommendations on how to use SYPRO® Ruby protein stain in conjunction with the Pro-Q® Diamond stain.

Staining Minigels — Standard Protocol

The standard protocol works reliably for nearly all Tris-glycine SDS-PAGE minigels. If using Invitrogen NuPAGE® Bis-Tris gels, see the note below in step 3.1.

3.1 Fix the gel. Immerse the gel in ~100 mL of fix solution (prepared in step 1.1) and incubate at room temperature with gentle agitation for at least 30 minutes. Repeat the fixation step once more to ensure that all of the SDS is washed out of the gel. Gels can be left in the fix solution overnight.

Note: For best results with NuPAGE® Bis-Tris gels, fix overnight; alternatively, follow the instructions for fixation and washing in the rapid protocol below. To fix overnight, fix as described above for 30 minutes, then fix a second time overnight with gentle agitation.

3.2 Wash the gel. Incubate the gel in ~100 mL of ultrapure water with gentle agitation for 10 minutes. It is important that the gel be completely immersed in water in order to remove all of the methanol and acetic acid from the gel. Residual methanol or acetic acid will interfere with Pro-Q® Diamond phosphoprotein staining. Repeat this step twice, for a total of three washes.

3.3 Stain the gel. Incubate the gel in a volume of Pro-Q® Diamond phosphoprotein gel stain equivalent to 10 times the volume of the gel (e.g., 60 mL for Novex® precast minigels), with gentle agitation in the dark for 60–90 minutes. If directly comparing multiple gels, it is important that the incubation time be the same for each gel. DO NOT stain overnight, as this will result in higher background staining.

3.4 Destain the gel. Destaining is important to reduce the gel background signal and to reduce the signal from nonspecific staining. Incubate the gel in 80–100 mL of destain solution (see step 1.2) with gentle agitation for 30 minutes at room temperature, protected from light. Repeat this procedure two more times. The optimal total destaining time is about 1.5 hours.

3.5 Wash the gel. Wash twice with ultrapure water at room temperature for 5 minutes per wash. If the background is high or irregular, the gel may be left in the second wash for 20–30 minutes and re-imaged.

Staining Minigels — Rapid Protocol

Heating the water washes and the stain in a microwave oven greatly shortens the required time for staining and destaining compared to the standard protocol.⁸ This rapid protocol has been verified with Tris-glycine SDS-PAGE and NuPAGE® Bis-Tris gels. Volumes and incubation times were optimized for standard 8 cm × 8 cm × 1 mm minigels. Larger or thicker gels will require larger volumes and longer incubation times.

4.1 Fix the gel. Immerse the gel in ~100 mL fix solution and incubate at room temperature with gentle agitation for 30 minutes. Repeat the fixation step once. Note: For NuPAGE® Bis-Tris gels, see the note in step 4.2.

4.2 Wash the gel. Incubate the gel in ~100 mL ultrapure water at room temperature with gentle agitation for 10 minutes. Be sure the gel is completely immersed to efficiently remove the methanol and acetic acid, which will interfere with Pro-Q® Diamond staining. Repeat this step twice more, for a total of three washes.

Note: For NuPAGE® Bis-Tris gels, fix the gel twice for 30 minutes each time, then wash four times, heating the gel and water during each wash step in a microwave oven. Heat the gel in water to 70–80°C by microwaving twice for ~30 seconds each time on high power, agitating the water in between to distribute the heat. Remove the container from the microwave oven, and agitate the gel gently in the water for 15 minutes. Repeat the heating and 15-minute agitation-incubation for a total of four heated washes. As an alternative to microwaving, the gel can be fixed in 100 mL fixative solution for 30 minutes as above, then overnight in 100 mL of fix solution. Wash as in step 4.2.

4.3 Stain the gel. In a microwave-safe container, microwave a single gel in 10 times the volume of the gel (60 mL for Invitrogen Novex® precast minigels) of Pro-Q® Diamond phosphoprotein

gel stain to 65–80°C (about 40 seconds, though microwave ovens vary considerably. We suggest testing your oven using water and a container similar to the one you will be using.) Incubate in the dark with gentle agitation for 7 minutes. Reheat the gel and stain by microwaving to 65–80°C again (about 20 seconds). Incubate in the dark with gentle agitation for an additional 7 minutes.

4.4 Destain the gel. Destaining is important to reduce the gel background signal and to reduce the signal from nonspecific staining. Incubate the gel in 80–100 mL of destain solution (see step 1.2) with gentle agitation for 30 minutes at room temperature, protected from light. Repeat this procedure once. The total destaining time is about 1 hour.

4.5 Wash the gel. Wash twice with ultrapure water at room temperature for 5 minutes per wash. If the background is high or irregular, the gel may be left in the second wash for an additional 20–30 minutes and re-imaged.

Staining Large (2-D) Gels

This protocol is for 20 cm × 20 cm × 1 mm gels.

5.1 Fix the gel. Immerse the gel in ~500 mL of fix solution (prepared in step 1.1) and incubate at room temperature with gentle agitation for 30–60 minutes. Repeat the fixation overnight to ensure that all of the SDS is washed out of the gel.

5.2 Wash the gel. Incubate the gel in ~500 mL of ultrapure water with gentle agitation for 15 minutes. It is important that the gel be completely immersed in water in order to remove all of the methanol and acetic acid from the gel. Residual methanol or acetic acid will interfere with Pro-Q® Diamond phosphoprotein staining. Repeat this step two times for a total of three washes.

5.3 Stain the gel. Incubate the gel in the dark in 500 mL of Pro-Q® Diamond phosphoprotein gel stain with gentle agitation for 1.5–2 hours. If directly comparing multiple gels, it is important that the incubation time be the same for each gel. DO NOT stain overnight, as this will result in higher background staining.

5.4 Destain the gel. Destaining is important to reduce the gel background signal and to reduce the signal from nonspecific staining. Incubate the gel in 500 mL of destain solution (see step 1.2) with gentle agitation for 30 minutes at room temperature, protected from light. Repeat this procedure two more times. The optimal total destaining time is about 1.5 hours. Gels may be destained for longer periods, up to overnight; however, overnight destaining may result in a two- to threefold reduction in signal intensity.

5.5 Wash the gel. Wash twice with ultrapure water at room temperature for 5 minutes per wash.

Imaging and Documenting the Gel

Pro-Q® Diamond phosphoprotein stain has an excitation maximum at ~555 nm and an emission maximum at ~580 nm (Figure 3). Imaging instruments with light sources and filters that match the excitation and emission maxima will result in the highest sensitivity.

Visible-light-based scanners. Stained gels are best visualized using excitation at 532–560 nm, such as that provided with a visible-light laser-based or xenon arc lamp-based gel-scanning instrument. For most instruments, a ~580 nm longpass or ~600 nm bandpass emission filter is recommended.

Transillumination. Stained gels can be visualized on a blue-light transilluminator or on a 300 nm UV transilluminator; however, the sensitivity will be 3- to 10-fold lower than with an

Protocol Quick Guide for Experienced Users

	Reagent	Standard Protocol		Rapid Protocol	
		Tris-glycine gels	NuPAGE® Bis-Tris gels ¹	Tris-glycine gels	NuPAGE® Bis-Tris gels ²
Step 1: Fix	50% methanol, 10% acetic acid	100 mL, 30 min 2 times	100 mL, 30 min 100 mL, overnight	100 mL, 30 min 2 times	100 mL, 30 min 2 times
Step 2: Wash	Ultrapure water	100 mL, 10 min 3 times	100 mL, 10 min 3 times	100 mL, 10 min 3 times	100 mL, 15 min (bring to 60–80°C with microwave) 4 times
Step 3: Stain	Pro-Q® Diamond stain	60 mL, 60–90 min	60 mL, 60–90 min	60 mL, microwave 40 sec to 65–80°C, shake 7 min, microwave 20 sec to 65–80°C, shake 7 min	60 mL, microwave ~40 sec to 65–80°C, shake 7 min, microwave ~20 sec to 65–80°C, shake 7 min
Step 4: Destain	Pro-Q® Diamond destain solution; or 20% acetonitrile, 50 mM sodium acetate, pH 4	80–100 mL, 30 min 3 times	80–100 mL, 30 min 3 times	80–100 mL, 30 min 2 times	80–100 mL, 30 min 2 times
Step 5: Wash	Ultrapure water	100 mL, 5 min 2 times	100 mL, 5 min 2 times	100 mL, 5 min 2 times	100 mL, 5 min 2 times
Total solution changes		11	11	10	11
Total time		4.25–4.75 hr	overnight + 3.25–3.75 hr (or 4.75–5.25 hr ¹)	3.0 hr	3.5 hr (or overnight + 2.0 hr ²)

1. Alternatively, fix twice for 30 minutes followed by four 15 minute water washes microwaved to 60–80°C.

2. Alternatively, fix 30 minutes and then overnight followed by three room temperature water washes for 10 minutes each.

instrument capable of 532–560 nm excitation. Images can be documented using either conventional or digital photography. With a Polaroid camera and Polaroid 667 black-and-white film, use an appropriate longpass filter, such as the SYPRO[®] photographic filter (S6656), and an exposure time of ~4 seconds. The red-orange filters typically used to photograph gels stained with ethidium bromide do not work well. For digital cameras, use a filter that corresponds closely to the emission characteristics of the stain, such as a 600 nm bandpass filter. For photography, optimal sensitivity may require exposures long enough that you can see the edge of the gel and a faint gel background in the image.

Staining the Gel for Total Protein

After staining with Pro-Q[®] Diamond stain, the gel can be stained with a total-protein stain. SYPRO[®] Ruby protein gel stain is the most useful for this purpose, because it will aid in determining the relative phosphorylation state of a given protein. Furthermore, for 2-D gels, SYPRO[®] Ruby total-protein staining makes it easier to localize a protein to a particular spot within a complex protein pattern. The phosphoprotein staining pattern must be viewed and documented before proceeding with total-protein staining, because the Pro-Q[®] Diamond stain will be washed away during the staining procedure for total protein.

To use SYPRO[®] Ruby gel stain as a post-stain after Pro-Q[®] Diamond staining:

6.1 Image the gel for Pro-Q[®] Diamond stain.

6.2 Rinse the gel in ultrapure water two times for 5 minutes each (not necessary if the gel has already been rinsed in water).

6.3 Incubate the gel directly in SYPRO[®] Ruby gel stain solution. There is no need to repeat the fixation step.

6.4 Continue with the SYPRO[®] Ruby basic or rapid protocol and gel imaging, as described in the SYPRO[®] Ruby Product Information Sheet.

Image Optimization

For unequivocal identification of phosphorylated proteins, special attention must be paid to the grayscale adjustment on your digital image. When adjusting the grayscale, it is possible to make every band dark, regardless of its intensity; faint background staining of nonphosphorylated proteins can be accentuated to the point that all proteins appear stained (Figure 4). To optimize the grayscale setting, it is essential to run a known positive and negative control in the gel. PeppermintStick[™] phosphoprotein molecular weight standards (P27167, P33350) contain roughly equal amounts of phosphorylated and nonphosphorylated proteins. An image can easily be optimized by focusing on the lane containing the standards and adjusting the

grayscale so that the phosphorylated proteins show up as dark bands and the nonphosphorylated proteins show up only faintly (Figure 4). With a further small adjustment, bands corresponding to nonphosphorylated standards disappear; at this point, the digital image is optimized for analysis. To account for differences in loading, or when using samples of unknown protein concentration, it is useful to further analyze the gel by staining it with SYPRO[®] Ruby protein gel stain and comparing the total-protein amount with the phosphoprotein amount. By performing a ratiometric analysis of each band or spot of the gel, it is possible to distinguish a large amount of minimally phosphorylated protein from a small amount of heavily phosphorylated protein. To perform the ratiometric analysis, measure the fluorescence intensity of the Pro-Q[®] Diamond signal (D) and the SYPRO[®] Ruby signal (S), and calculate the D/S ratios for 2–3 known phosphorylated control proteins as well as for proteins of interest. The ratios should be much higher for phosphoproteins (e.g., ~8.0) than for nonphosphorylated proteins (e.g., ~0.05), facilitating the distinction between specific and nonspecific signals. These numbers should be determined for each gel empirically.³

Disposal

Pro-Q[®] Diamond phosphoprotein stain is classified as an irritant. Our proprietary Pro-Q[®] Diamond phosphoprotein gel destaining solution is considered to be irritating to eyes and skin and a potential reproductive hazard. Acetonitrile, a component of the user-prepared destain solution, is toxic. None of these solutions should reach groundwater, a waterway, or a sewage system. We recommend that used staining and destaining solutions be mixed with flammable waste and disposed of by destructive incineration rather than by sewerage or landfill.

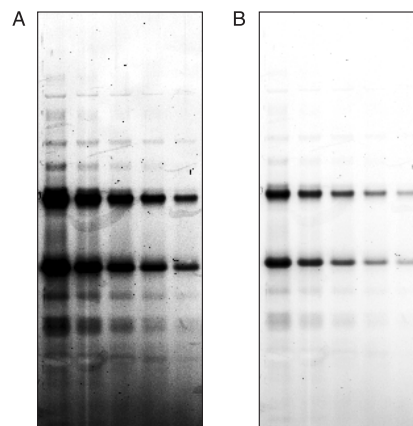


Figure 4. Optimizing the output of digital images. A dilution series of PeppermintStick phosphoprotein molecular weight standards was stained with Pro-Q[®] Diamond phosphoprotein gel stain and imaged on a laser scanner. The digital image was manipulated to illustrate improper grayscale adjustment (A), then optimized to reveal the correct staining pattern (B).

Troubleshooting Suggestions

Problem	Causes	Solutions
Dark, uneven, or swirled background on gel.	Incomplete removal of destaining solution; some gel types, such as gradient gels, tend to show increased background levels toward the bottom of the gel.	Leave the gel in the final wash for 15–30 minutes, then image.
Dim fluorescent signal when the gel is photographed using UV or blue-light transillumination.	Pro-Q [®] Diamond–stained gels are optimally visualized using an excitation wavelength of 532–560 nm. While there is some excitation in the UV and blue-light wavelengths, it is suboptimal and results in an image 3- to 10-fold weaker than when light at 532–560 nm is used for excitation.	If UV or blue light must be used, make sure the proper photographic filter is used and the exposure time is adequate. Exposure for optimal sensitivity may need to be long enough that you can see the edge of the gel and a faint gel background in the image. For best results, use a laser-based imager with 530 nm excitation.
Streaks or speckles visible on the gel.	<ol style="list-style-type: none"> 1) Dust. 2) Contamination of solutions used to make in-house poured gels, running buffer, or sample loading buffer. 3) Poor water quality. 4) Contamination of imager surface with fluorescent compounds. 5) Handling of gel with bare hands or contaminated or powdered gloves. 6) Staining of gel with insufficient agitation. 7) Incomplete immersion of gel during staining or destaining. 	<ol style="list-style-type: none"> 1) Avoid getting dust into solutions, on gels, and on the surface of the imaging system. 2) Use freshly made and filtered solutions. Buy precast gels if necessary. 3) Use ultrapure water (≥ 18 megohm-cm). Wash glassware thoroughly. 4) Clean the surface of the imaging system with 70–100% ethanol followed by ultrapure water. 5) Handle gels with clean, powder-free gloves. 6) Perform all staining, destaining, and washing incubations on an orbital shaker set at 50–60 rpm. 7) Ensure that the gel is not clinging to the side of the dish, but is completely submerged, after each solution change.
Faint or no staining of proteins.	<ol style="list-style-type: none"> 1) SDS not sufficiently removed from the gel during fixation or water wash steps. 2) Methanol and/or acetic acid not sufficiently removed during water wash step. 	Include an overnight fixation as in step 3.1, or perform heated water washes as in step 4.2.

References

1. Electrophoresis 25, 2526 (2004); 2. Electrophoresis 25, 2520 (2004); 3. J Biol Chem 278, 27251 (2003); 4. Proteomics 3, 1128 (2003); 5. Electrophoresis 25, 2539 (2004); 6. Electrophoresis 25, 2545 (2004); 7. Proteomics 4, 3464 (2004); 8. Rapid Commun Mass Spectrom 16, 272 (2002).

Product List *Current prices may be obtained from our website or from our Customer Service Department.*

Cat #	Product Name	Unit Size
M33305	Multiplexed Proteomics [®] Phosphoprotein Gel Stain Kit #1 *with 1 L each of Pro-Q [®] Diamond (P33300) and SYPRO [®] Ruby (S12000) gel stains*	1 set
M33306	Multiplexed Proteomics [®] Phosphoprotein Gel Stain Kit #2 *with 200 mL each of Pro-Q [®] Diamond (P33301) and SYPRO [®] Ruby (S12001) gel stains*	1 set
MPP33305	Multiplexed Proteomics [®] Phosphoprotein Gel Stain Kit *includes MPP33300 and S12000*	1 kit
MPP33306	Multiplexed Proteomics [®] Phosphoprotein Gel Stain Kit *includes MPP33301 and S12001*	1 kit
P27167	PeppermintStick [™] phosphoprotein molecular weight standards	40 μ L
P33350	PeppermintStick [™] phosphoprotein molecular weight standards *200 gel lanes*	400 μ L
MPP33300	Pro-Q [®] Diamond Phosphoprotein Gel Staining Kit *includes 1 L stain and 40 μ L standard*	1 kit
MPP33301	Pro-Q [®] Diamond Phosphoprotein Gel Staining Kit *includes 200 mL stain and 40 μ L standard*	1 kit
MPP33302	Pro-Q [®] Diamond Phosphoprotein Gel Staining Kit *includes 5 L stain and 400 μ L standard*	1 kit
P33300	Pro-Q [®] Diamond phosphoprotein gel stain	1 L
P33301	Pro-Q [®] Diamond phosphoprotein gel stain	200 mL
P33302	Pro-Q [®] Diamond phosphoprotein gel stain *bulk packaging*	5 L
P33310	Pro-Q [®] Diamond phosphoprotein gel destaining solution	1 L
P33311	Pro-Q [®] Diamond phosphoprotein gel destaining solution *bulk packaging*	5 L
R33400	Rhinohide [™] polyacrylamide gel strengthener concentrate *sufficient additive for 1 L of 30% acrylamide/bis-acrylamide (37.5:1)*	200 mL
R33410	Rhinohide [™] Polyacrylamide Gel Strengthener Kit *makes 1 L of Rhinohide [™] 30% acrylamide/bis-acrylamide (37.5:1)*	1 kit
S12000	SYPRO [®] Ruby protein gel stain	1 L
S12001	SYPRO [®] Ruby protein gel stain	200 mL
S21900	SYPRO [®] Ruby protein gel stain *bulk packaging*	5 L
S6656	SYPRO [®] photographic filter	each

Product List *Products and current prices may be obtained from Invitrogen (www.invitrogen.com).*

Cat #	Product Name	Unit Size
LC5928	BenchMark™ Fluorescent Protein Standard	125 µL
N12387	DryEase® Mini-Gel Drying System	1 kit
LC5677	Mark12™ Unstained Standard.....	1 mL
NP0330BOX	NuPAGE® Novex 4-12% Bis-Tris ZOOM® Gels, 10 gels.	1 box
ZM0002	ZOOM® IPGRunner™ Combo Kit.....	1 kit
ZM0011	ZOOM® Strips, pH 3-10 NL	12 strips
ZM0018	ZOOM® Strips, pH 3-10 L.....	12 strips
ZM0012	ZOOM® Strips, pH 4-7.....	12 strips
ZM0013	ZOOM® Strips, pH 6-10.....	12 strips
ZM0017	ZOOM® Strips, pH 9-12.....	12 strips
ZS10003	ZOOM® 2D Protein Solubilizer Kit	2 x 5 mL
ZF10001	ZOOM® IEF Fractionator Combo Kit	1 kit
ZF10006	ZOOM® Basic Protein Kit.....	1 kit

Contact Information

Further information on Molecular Probes products, including product bibliographies, is available from your local distributor or directly from Molecular Probes. Customers in Europe, Africa and the Middle East should contact our office in Paisley, United Kingdom. All others should contact our Technical Assistance Department in Eugene, Oregon.

Please visit our website — probes.invitrogen.com — for the most up-to-date information.

Molecular Probes, Inc.

29851 Willow Creek Road, Eugene, OR 97402

Phone: (541) 465-8300 • Fax: (541) 335-0504

Customer Service: 6:00 am to 4:30 pm (Pacific Time)

Phone: (541) 335-0338 • Fax: (541) 335-0305 • probesorder@invitrogen.com

Toll-Free Ordering for USA:

Order Phone: (800) 438-2209 • Order Fax: (800) 438-0228

Technical Service: 8:00 am to 4:00 pm (Pacific Time)

Phone: (541) 335-0353 • Toll-Free (800) 438-2209

Fax: (541) 335-0238 • probetech@invitrogen.com

Invitrogen European Headquarters

Invitrogen, Ltd.

3 Fountain Drive

Inchinnan Business Park

Paisley PA4 9RF, UK

Phone: +44 (0) 141 814 6100 • Fax: +44 (0) 141 814 6260

Email: euroinfo@invitrogen.com

Technical Services: eurotech@invitrogen.com

Molecular Probes products are high-quality reagents and materials intended for research purposes only. These products must be used by, or directly under the supervision of, a technically qualified individual experienced in handling potentially hazardous chemicals. Please read the Material Safety Data Sheet provided for each product; other regulatory considerations may apply.

Limited Use Label License: Labeling and Detection Technology

For research use only. Not intended for any animal or human therapeutic or diagnostic use. The purchase of this product conveys to the buyer the non-transferable right to use the purchased amount of the product and components of the product in research conducted by the buyer (whether the buyer is an academic or for-profit entity). The buyer cannot sell or otherwise transfer (a) this product (b) its components or (c) materials made using this product or its components to a third party or otherwise use this product or its components or materials made using this product or its components for Commercial Purposes. The buyer may transfer information or materials made through the use of this product to a scientific collaborator, provided that such transfer is not for any Commercial Purpose, and that such collaborator agrees in writing (a) to not transfer such materials to any third party, and (b) to use such transferred materials and/or information solely for research and not for Commercial Purposes. Commercial Purposes means any activity by a party for consideration and may include, but is not limited to: (1) use of the product or its components in manufacturing; (2) use of the product or its components to provide a service, information, or data; (3) use of the product or its components for therapeutic, diagnostic or prophylactic purposes; or (4) resale of the product or its components, whether or not such product or its components are resold for use in research. Invitrogen Corporation will not assert a claim against the buyer of infringement of the above patents based upon the manufacture, use, or sale of a therapeutic, clinical diagnostic, vaccine or prophylactic product developed in research by the buyer in which this product or its components was employed, provided that neither this product nor any of its components was used in the manufacture of such product. If the purchaser is not willing to accept the limitations of this limited use statement, Invitrogen is willing to accept return of the product with a full refund. For information on purchasing a license to this product for purposes other than research, contact Molecular Probes, Inc., Business Development, 29851 Willow Creek Road, Eugene, OR 97402. Tel: (541)465-8300. Fax: (541)335-0504.

All names containing the designation ® are registered with the U.S. Patent and Trademark Office.

Coomassie is a trademark of BASF Aktiengesellschaft. Servin' Saver and Stain Shield are trademarks of Rubbermaid, Inc.

Copyright 2005, 2011 Molecular Probes, Inc. All rights reserved. This information is subject to change without notice.